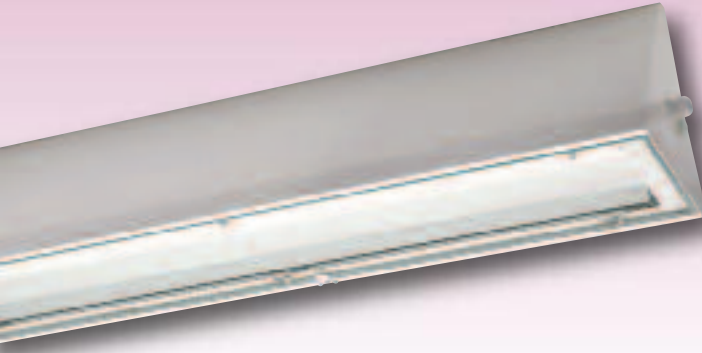


Explosion-Protected Sheet Steel Light Fitting for Dust Hazardous Areas of Zone 22 Series nD187/188...



Applications:

Dust hazardous areas of zone 2 and zone 22

Design:

Housing: Sheet steel, powder coated in white (RAL 9016), stainless steel upon request.

Glass cover: Impact resistant safety glass pane, frameless / hinged.

Reflector: Hinged, white painted sheet steel, detachable.

Central locking system operated by a 5mm allen key, hinges on the opposite side.

Wiring: Eletronic ballast.

Connecting terminal: Standard L1 + N +PE, up to 2,5mm² max. (6,0mm² on request).

Cable entries: 3 entries M25 x 1,5 (2 glands, 1 of them with plug and 1 screw plug) LOOP-IN/OUT possible, for some versions temperature resistant cable is required

Through wiring system: 5 x 2,5mm² through wiring or preparation for 5-pole LOOP-IN/OUT at extra charge

Mounting: Horizontal, with 2 eyebolts (included).

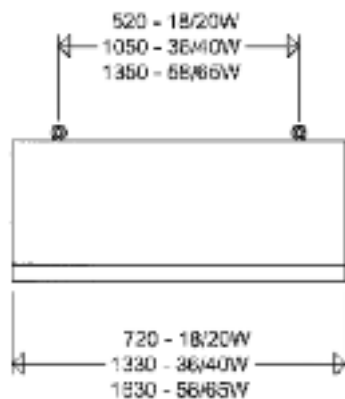
Note:

Ask for stainless steel versions in case of permanent humidity or corrosive atmosphere presence.

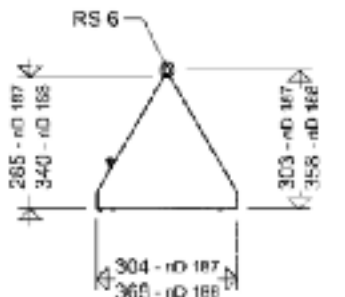
STAINLESS STEEL
corrosion resistant

When switched off the light fittings must not be exposed to an a.t. of more than +85°C.

Special versions available for extreme conditions (short cycle operation, e.g. rain storage reservoirs or wastewater treatment plants and equivalent) Type E1003 to be selected (please contact us).



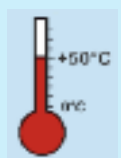
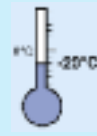
Eyebolt RS 6



Schuch Quality - your advantage:

- sturdy design of high chemical resistance for application in rough industrial conditions:**
 - housing in a special dust repellent design, made from powder coated sheet steel or upon request from stainless steel
 - frameless safety glass pane
 - solid central locking system made from galvanized steel and high-grade stainless steel hinges
- "end-of-life swiching-off system" i.e. at the end of its life a fluourescent tube is safely switched off**
- easy to install and maintain**
 - suspension mount by means of chains or steel cables
 - Original SCHUCH central locking system with hinged safety glass pane for easy lamp replacement
 - easily accessible connection compartment via hinged reflector
- wide range of application and flexibility at most different environmental conditions**
 - for gas and dust hazardous areas (Zones 2 and 22)
 - wide range of permissible ambient temperatures -20°C up to +40/50°C
 - especially for application in dusty atmospheres, due to special dust repellent design (zone 22)
 - looping system on one side of the housing; bilateral through wiring system (on request)

STAINLESS STEEL
corrosion resistant



nD187/188...



II 3 G Ex nA IIC
T4 Gc

II 3 D Ex tc IIIC
T80°C Dc

IP65



Ignition protection: nA

Marking:

II 3 G Ex nA IIC T4 Gc (Zone 2)

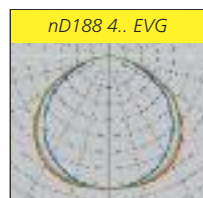
II 3 D Ex tc IIIC T80°C Dc (Zone 22)

Permissible ambient temperature:

-20°C to +40/50°C (1 or 2 lamps)

-20°C to +40°C (3 or 4 lamps)

Rated voltage: 220-240 V AC/DC, 0 or 50/60 Hz.



Type	Article no.	Temp. class	Lamps/W	Weight ca. kg
narrow housing				
nD187 118 EVG	18701 0001	T4	1 x T 26/18W	10,0
nD187 218 EVG	18701 0002	T4	2 x T 26/18W	10,0
nD187 318 EVG	18701 0003	T4	3 x T 26/18W	10,2
nD187 136 EVG	18701 0004	T4	1 x T 26/36W	17,0
nD187 236 EVG	18701 0005	T4	2 x T 26/36W	17,0
nD187 336 EVG	18701 0006	T4	3 x T 26/36W	17,2
nD187 158 EVG	18701 0007	T4	1 x T 26/58W	21,0
nD187 258 EVG	18701 0008	T4	2 x T 26/58W	21,0
nD187 358 EVG	18701 0009	T4	3 x T 26/58W	21,2
wide housing				
nD188 318 EVG	18701 0201	T4	3 x T 26/18W	15,0
nD188 418 EVG	18701 0202	T4	4 x T 26/18W	15,0
nD188 336 EVG	18701 0203	T4	3 x T 26/36W	22,0
nD188 436 EVG	18701 0204	T4	4 x T 26/36W	22,0
nD188 358 EVG	18701 0205	T4	3 x T 26/58W	27,0
nD188 458 EVG	18701 0206	T4	4 x T 26/58W	27,0

Looping the cable on one side:

All light fittings of series nD187/188.. have got 2 cable entries on one small side of the housing for cable looping instead of the through wiring system.

Further Series / Equipment

- up to 4 cable entries
- various types of glands
- with through wiring system up to 6 x 6,0mm²
- with looping the mains cable at one end
- with 2 individual electronic ballasts and monitoring device for individual monitoring the light fitting connected to central or group battery systems
- stainless steel housing, powder coated
- silicone-free version
- zone 1 version (series e187/188...)
- non explosion proof version (series 187/188..., see water-/dust-proof fittings in catalogue)
- with isolating switch



Explosion-Protected
Light Fittings Zone 2/22

Accessories / Spare Parts

Type	Article no.	
Spare glass panes		
181 18-1	18090 9001	for narrow housings, 1, 2 und 3 x 18W
181 36-1	18090 9002	for narrow housings, 1, 2 und 3 x 36W
181 58-1	18090 9003	for narrow housings, 1, 2 und 3 x 58W
182 18-1	18090 9004	for wide housings, 3 und 4 x 18W
182 36-1	18090 9005	for wide housings, 3 und 4 x 36W
182 58-1	18090 9006	for wide housings, 3 und 4 x 58W
Cable entries		
2537 G	90117 9006	explosion-protected cable gland M25 x 1,5 with nut
2539 G	90119 9001	explosion-protected cable gland M25 x 1,5 with nut and plug
2538 G	90118 9006	explosion-protected plug M25 x 1,5 with nut
Lamp holder		
182/1 T140	90056 9005	ex-proof snap-type/plug-socket holder

Further accessories as well as carrier rail systems and through wiring system are available.