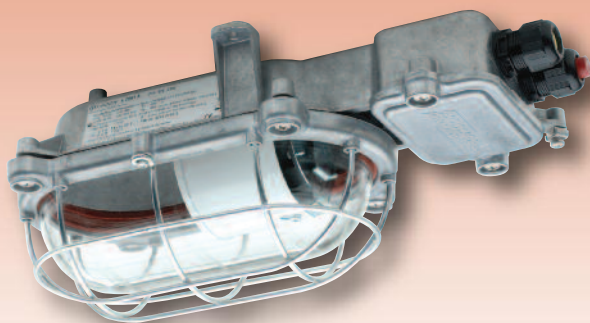


Explosion-Protected Oval-Shaped Light Fitting for GLS lamps up to 100 W Series e2691/2692... A



Applications:

Hazardous locations of zones 1/21 and 2/22.

Design:

Housing: Diecast aluminium.

Glass: Clear heat resistant glass.

Wire guard: Galvanized steel (OSK without wire guard).

Cable entry system / connection terminals:

e2691 A (with connection box):

2 entries of size M25 x 1,5 (2 ex-protected plastic glands, 1 of them with ex-protected plastic plug); 3 pole terminal, max. connection range 6,0mm².

e2692 A (without connection box):

2 entries M20 x 1,5 (1 ex-protected gland, 1 ex-protected plug), mains connection with heat resistant cable (up to 145°C). 3 pole terminal, max. connection range 2,5mm².

Standard: Any method except:

100W, 230V AC/DC vertical wall mounting with downward lamp direction not allowed.

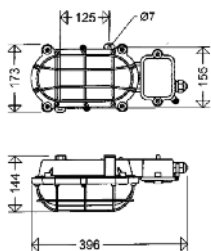
Mounting: 2 cast on brackets for wall or ceiling mounting.

DB - standardized by Deutsche Bahn AG

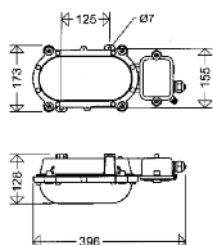
Note:

The specified incandescent lamps are of special design. Such lamps are therefore not forbidden according to the ErP guideline.

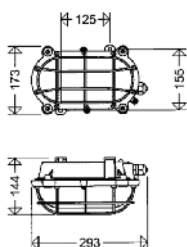
Series e2691... with wire guard



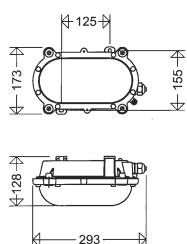
Series e2691... without wire guard



Series e2692... with wire guard

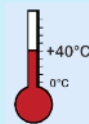


Series e2692... without wire guard



SCHUCH Quality - your advantage:

- sturdy industrial design for reliable and safe long-term use
 - sturdy and corrosion-resistant housing made of cast aluminium
 - all outer screws and bolts made of stainless steel
 - shock and heat resistant safety glass
 - additional safety due to robust wire guard
- easy to install and to maintain
 - cost efficient, no separate junction box needed when installing type e2691 with cast on connection box in increased safety.
- for applications in different ambient conditions
 - ATEX-certified for gas and dust hazardous areas (Zones 1,21 and 2,22)
 - ATEX-certified for explosion group II C
 - wide range of admissible ambient temperature from -20°C to +40°C (worldwide first certification)



e2691/2692 A



II 2 G Ex d e IIC
T2/T3/T4 Gb

II 2 D Ex tb IIIC
T150°C Db

IP65



EC-Type Examination Certificate:

PTB 03 ATEX 2164X

Marking:

II 2 G Ex d e IIC T2/T3/T4 Gb (Zone 1)

II 2 D Ex tb IIIC T150°C Db (Zone 21)

Ignition protection: e (increased safety)

Rated voltage: 230V AC/DC

Admissible ambient temperature:

-20°C up to +40°C



Type	Article no.	Lamps Watt	Voltage	Temp. class	Weight ca. kg
------	-------------	------------	---------	-------------	---------------

for GLS lamps of brands OSRAM or RADIUM acc. to DIN 49810 part 5 , socket E27 ... with connection chamber

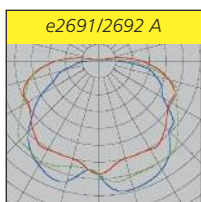
e2691 A	26911 0200	A25/40	230	T4	2,5
		A60	230	T3	2,5
		A100 ¹⁾	230	T2	2,5
e2691 A OSK ²⁾	26911 0201	- see above -	-	-	2,3

... without connection chamber

e2692 A	26921 0200	- see above -	-	-	2,1
e2692 A OSK ²⁾	26921 0201	- see above -	-	-	1,9

1) DIN 49810 part 4

2) without wire guard



Further Series / Equipment

- e2691: with 5 terminals, max. connection range 2,5mm²

- e2692: with cable entries M25 x 1,5mm²

Accessories / Spare parts

Type	Article no.	
2693 tw ATEX	26930 9003	spare glass
693 SIL	90020 9000	spare gasket
SK 693 A	69300 9001	spare wire guard
2537	90117 9000	cable gland M25 x 1,5 (for e2691 A)
2539	90119 9000	cable gland with plug M25 x 1,5 (for e2691 A)
2531 MS	90120 9001	brass gland M20 x 1,5 (for e2692 A)
2589	90121 9002	brass plug M20 x 1,5 (for e2692 A)