

**NEW**

# ExeLed 1

## LED-Light Fitting for Ex-Zones 1/2/1

### Series e865...

**Application:**

Hazardous locations of zones 1 (gas) and 21 (dust) as standard illumination or as emergency illumination in combination with external power supply units.

**Design:**

**Housing:** Glass fibre reinforced polyester resin.

**Cover:** Injected polycarbonate, frosted (F) or clear, silicone gasket.

**Closure:** Stainless steel clips (KE), two of them as safety clip (KES), to be opened with screwdriver only.

**Reflector:** Aluminium, painted, carrying the

encapsulated LED-modules and all electrical components, clipped into the cover, removable as a unit.

**Connection:** 3 poles up to 4 mm<sup>2</sup>.

**Cable entries:** 3 entries M25 x 1,5, (2 glands - one of them is plugged)

**Standard:** Facing downwards or forwards.

**Mechanical installation:**

Mounting accessories see spare parts/accessories.



**Technical Data:**

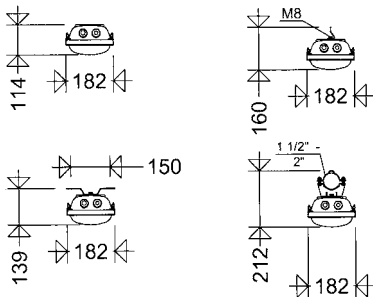
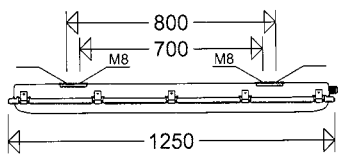
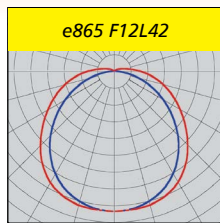
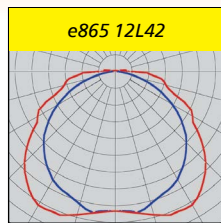
**LED:** Line modules appr. 6,500K, typically R<sub>a</sub> 80, L<sub>80</sub>B<sub>10</sub> > 50,000h at max. ambient temperature, (see notes)

**ECG:** 220-240V AC/DC, 0 or 50-60Hz, overvoltage, overload, short circuit, excess temperature protection

**Options:**

- dimmable via DALI-interface (DIMD)
- for explosive dust atmospheres Zone 21 (**t868...**)

- for higher ambient temperatures up to +70°C depending on version



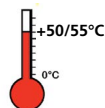
**SCHUCH Quality - your advantage:**

- LED modules with innovative encapsulation
- Explosion Group IIC, hence suitable for atmospheres with hydrogen and acetylene
- highest efficiency with luminous efficacy up to 142lm/W
- homogeneous illumination by using frosted diffusers (versions e865F.) no particular light points visible, comfortable perception of light, brilliant glare limitation
- high colour reproduction R<sub>a</sub> typically 80, according to the workplace guide lines suitable for nearly all plant locations
- reflector and cover in sandwich design to protect the LED-Modules from mechanical or electrostatic damages due to accidental contact.
- version with higher luminous flux for areas where higher illumination is needed
- for high ambient temperatures up to +70°C depending on version
- external mounting system for variable mounting distances and easy installation (retaining clips HK865 P)
- lower maintenance and downtime costs due to long maintenance intervals
- ECG and reflector with LED-modules replaceable by qualified personnel on-site

Article no.	Type	Power consumption [W] *	Luminous flux [lm] *	Luminous efficacy [lm/W]	Cover frosted	Cover clear	Ta max [°C]	Energy efficiency class	Substitute for **	Weight [kg] (without packing material)
-------------	------	-------------------------	----------------------	--------------------------	---------------	-------------	-------------	-------------------------	-------------------	--

**Note:**

This light fitting is not suitable for applications in areas with permanent high humidity in combination with only short periods of operation, such as sewage or stormwater retention tanks or water treatment plants.

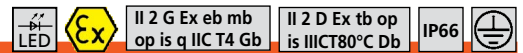


**Notes:**

**Limitations for LED-light fittings:** See chapter „Use of LED lighting in corrosive atmospheres“ in the Technical Appendix.

All technical data is relevant at the time of print. Actual technical data can be found in the internet under [www.schuch.de](http://www.schuch.de).

**e865...**



**EC-Type Examination Certificate:**

IBExU 16 ATEX 1008

**Ignition protection:** eb

**Marking:**

II 2 G Ex eb mb op is q IIC T4 Gb (Zone 1)

II 2 D Ex tb op is IIIC T80°C Db (Zone 21)

**Rated voltage:** 220-240V AC/DC, 0 or 50-60Hz.

**Permissible ambient temperature:**

-30°C up to see article table

**optimized for energy consumption ... polycarbonate cover, frosted**

86500 001	<b>e865F 12L42</b>	34	4.520	133	•	55	A++	2 x 36W	6,1
86500 002	<b>e865F 12L60</b>	47	5.920	126	•	55	A++	2 x 58W	6,1

**... polycarbonate cover, clear**

86500 0011	<b>e865 12L42</b>	34	4.770	140	•	55	A++	2 x 36W	6,1
86500 0012	<b>e865 12L60</b>	47	6.290	134	•	55	A++	2 x 58W	6,1

**with high luminous flux ... polycarbonate cover, frosted**

86500 0003	<b>e865F 12L85</b>	65	8.810	136	•	50	A++	> 2 x 58W	6,4
------------	--------------------	----	-------	-----	---	----	-----	-----------	-----

**... polycarbonate cover, clear**

86500 0013	<b>e865 12L85</b>	65	9.260	142	•	50	A++	> 2 x 58W	6,4
------------	-------------------	----	-------	-----	---	----	-----	-----------	-----

\* see notes

\*\* The given information is for rough orientation only. In each individual case a lighting calculation is necessary.



Photo: BASF

## Accessories / Spare Parts

Article No.	Type	
<b>Spare diffusers</b>		
86601 9001	<b>8654F</b>	PC, frosted
86601 9000	<b>8654</b>	PC, clear
<b>Latches</b>		
90055 9003	<b>KE VE 10</b>	stainless steel (packing unit 10)
90055 9001	<b>KES</b>	security clip, stainless steel
<b>Glands/ breather</b>		
90117 9006	<b>2537 G</b>	ex-protected plastic cable gland M25 x 1,5 with nut
90118 9006	<b>2538 G</b>	ex-protected plastic plug M25 x 1,5 with nut
90259 9000	<b>Klimastutzen EX</b>	M25 x 1,5
<b>Mounting material</b>		
86501 9003	<b>HK 865 P</b>	2 retaining clips for variable mounting distances
90001 0002	<b>H8V P</b>	2 hooks with bolts, stainless steel
90000 0002	<b>15A P</b>	2 ceiling brackets, hot galvanized steel
90032 0002	<b>15AV P</b>	2 ceiling brackets, stainless steel
90037 0004	<b>RO84 112 A P</b>	2 pipe clamps 1 1/2", stainless steel, with support
90038 0004	<b>RO84 2 A P</b>	2 pipe clamps 2", stainless steel, with support
26000 0004	<b>W26 P</b>	2 wall mounting angles
26000 0002	<b>W26/30 P</b>	2 wall mounting angles 30°
26000 0003	<b>W26/45 P</b>	2 wall mounting angles 45°