



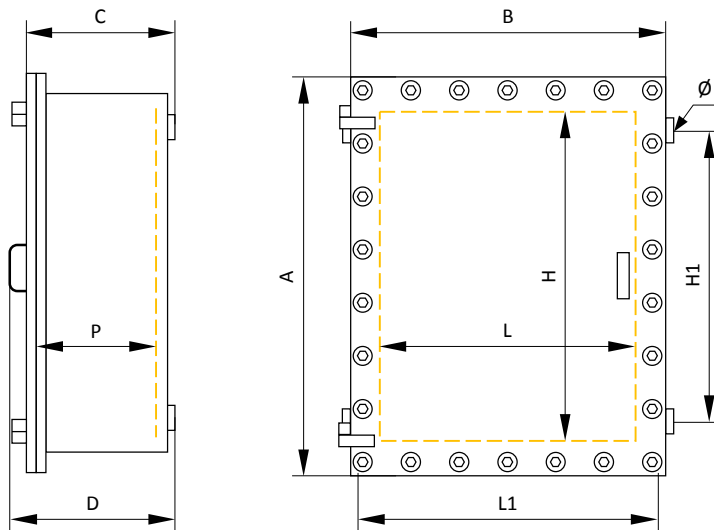
The flameproof control cabinets DE8BC are designed for the control, automation, distribution boards, motor starters or any other application. They are suitable for designing of complex systems.

The wide range of sizes and dissipated powers, one of the wider of the market, allows optional selection to suit the customer's needs and applications.

Several enclosures can be assembled on a frame and provided with optional junction boxes and/or control and signalling units in increased safety (Ex e).

TECHNICAL DATA

Material	Painted steel
IP rating	IP65/66 according to EN/IEC 60529
Temperature range	-40°C or -20°C ... +40°C or +50°C or +60°C
Certificate	<p>As equipment INERIS 03ATEX0005X IECEX INE 13.0045X</p> <p>As component INERIS 09ATEX9021U IECEX INE 11.0025U</p>
Marking	<p>II 2 GD</p> <p>As equipment Ex d IIB T6 ... T4 Gb Ex d IIB + H₂ T6 ... T4 Gb Ex tb IIIC T85°C ... T135°C Db</p> <p>Ex d [ia] IIB T6 Gb Ex d [ia] IIB + H₂ T6 Gb Ex d [ib] IIB T6 Gb or Ex d [ib] IIB + H₂ T6 Gb Ex tb IIIC T85°C Db</p> <p>As component Ex d IIB Gb Ex d IIB + H₂ Gb Ex tb IIIC Db</p>
Surface treatment	Painting RAL 7032 - Other colour or offshore painting on request
Accessories on request	Increased safety (Ex e) control and terminal enclosure in stainless steel AISI 316L Breather valves Earth stud Lifting eyes Cable glands



Dimensions

Product code	External + depth					Fixing holes		Mounting plate	Dissipation	Volume	Weight
	A	B	C	D	P	H1 x L1	Ø	H x L	max. (W)	dm ³	(kg)
DE8BC32	434	334	231	264	187	234 x 326	12	300 x 200	250	17.50	51
DE8BC351	474	354	233	266	187	274 x 346	12	350 x 225	250	21.06	61
DE8BC43	534	434	293	326	247	334 x 426	12	400 x 300	380	40.95	86
DE8BC44	544	544	306	339	247	334 x 526	20	400 x 400	380	52.65	113
DE8BC54	644	544	306	339	247	414 x 526	20	530 x 430	410	64.35	139
DE8BC64	744	544	308	341	247	514 x 526	20	630 x 430	470	76.05	154
DE8BC75	864	664	322	355	252	614 x 630	20	730 x 530	600	109.31	260
DE8BC86	964	764	369	402	292	714 x 734	20	830 x 630	600	168.51	370
DE8BC107	1164	864	379	412	292	908 x 868	20	1030 x 730	1200	240.18	530
DE8BC108	1164	864	424	457	337	908 x 868	20	1030 x 730	1400	275.62	580
DE8BC148	1590	940	510	543	412	1200 x 900	20	1430 x 780	2000	448.00	1100

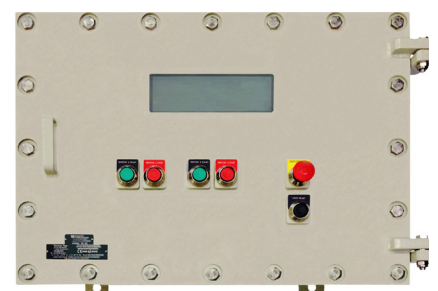
Number maximum of entries per side

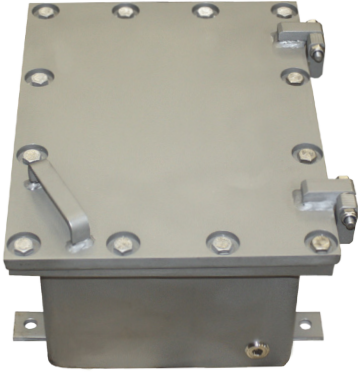
Product code	M20		M25		M32-M40-M42		M50		M63		M75	
	1/2"	Total (1)	1"	Total (1)	1" 1/2 - 1" 1/4	Total (1)	2"	Total (1)	2" 1/2	Total (1)	3"	Total (1)
DE8BC32	12	32	8	20	3	12	1	4	-	-	-	-
DE8BC351	12	24	8	18	3	8	1	4	-	-	-	-
DE8BC43	18	36	14	28	4	16	2	5	1	2	-	-
DE8BC44	20	40	16	30	5	20	3	6	1	3	-	-
DE8BC54	20	40	15	30	5	20	3	6	1	3	-	-
DE8BC64	28	60	18	50	7	28	4	9	1	4	-	-
DE8BC75	28	72	24	72	10	40	4	11	2	7	-	-
DE8BC86	32	112	28	100	20	80	5	17	2	8	1	4
DE8BC107	36	112	32	100	20	80	5	17	3	10	1	4
DE8BC108	36	112	32	100	20	80	5	17	3	10	1	4
DE8BC148	72	224	64	200	40	160	10	34	6	20	2	8

(1) Number total of entries on the periphery

Window for DE8BC (others on request)

Product code	Dimensions
REG 100 x 50	100 x 50
REG 100 x 100	100 x 100
REG 200 x 45	200 x 45
REG 235 x 75	235 x 75
REG D45	Ø 45
REG D60	Ø 60
REG D150	Ø 150





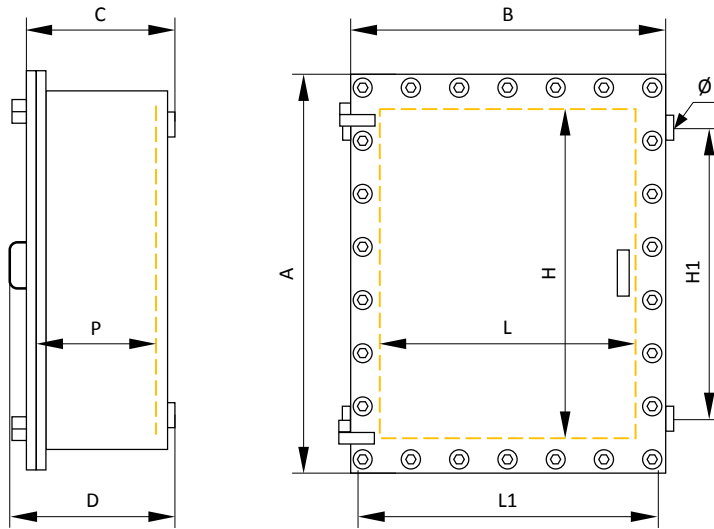
The flameproof control cabinets DE8BC in stainless steel AISI 316L are designed for the control, automation, distribution boards, motor starters or any other application. They are suitable for designing of complex systems for harsh environments and meet the requirements of use in ONSHORE or OFFSHORE.

The wide range of sizes and dissipated powers, one of the wider of the market, allows optional selection to suit the customer's needs and applications.

Several enclosures can be assembled on a frame and provided with optional junction boxes and/or control and signalling units in increased safety (Ex e).

TECHNICAL DATA

Material	Stainless steel AISI 316L
IP rating	IP65/66 according to EN/IEC 60529
Temperature range	-40°C or -20°C ... +40°C or +50°C or +60°C
Certificate	<p>As equipment INERIS 03ATEX0005X IECEX INE 13.0045X</p> <p>As component INERIS 09ATEX9021U IECEX INE 11.0025U</p>
Marking	<p>II 2 GD</p> <p>As equipment Ex d IIB T6 ... T4 Gb Ex d IIB + H₂ T6 ... T4 Gb Ex tb IIIC T85°C ... T135°C Db</p> <p>Ex d [ia] IIB T6 Gb Ex d [ia] IIB + H₂ T6 Gb Ex d [ib] IIB T6 Gb or Ex d [ib] IIB + H₂ T6 Gb Ex tb IIIC T85°C Db</p> <p>As component Ex d IIB Gb Ex d IIB + H₂ Gb Ex tb IIIC Db</p>
Surface treatment	Sand blasting - Offshore painting on request
Accessories on request	<p>Increased safety (Ex e) control and terminal enclosure in stainless steel AISI 316L</p> <p>Breather valves</p> <p>Earth stud</p> <p>Lifting eyes</p> <p>Cable glands</p>



Dimensions

Product code	External + depth					Fixing holes		Mounting plate	Dissipation	Volume	Weight
	A	B	C	D	P	H1 x L1	Ø	H x L	max. (W)	dm ³	(kg)
DE8BC32S	434	334	231	264	187	234 x 326	12	300 x 200	250	17.50	51
DE8BC351S	474	354	233	266	187	274 x 346	12	350 x 225	250	21.06	61
DE8BC43S	534	434	293	326	247	334 x 426	12	400 x 300	380	40.95	86
DE8BC44S	544	544	306	339	247	334 x 526	20	400 x 400	380	52.65	113
DE8BC54S	644	544	306	339	247	414 x 526	20	530 x 430	410	64.35	139
DE8BC64S	744	544	308	341	247	514 x 526	20	630 x 430	470	76.05	154
DE8BC75S	864	664	322	355	252	614 x 630	20	730 x 530	600	109.31	260
DE8BC86S	964	764	369	402	292	714 x 734	20	830 x 630	600	168.51	370
DE8BC107S	1164	864	379	412	292	908 x 868	20	1030 x 730	1200	240.18	530
DE8BC108S	1164	864	424	457	337	908 x 868	20	1030 x 730	1400	275.62	580
DE8BC148S	1590	940	510	543	412	1200 x 900	20	1430 x 780	2000	448.00	1100

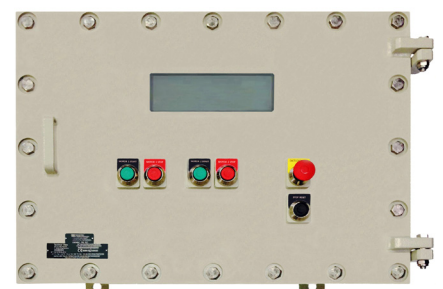
Number maximum of entries per side

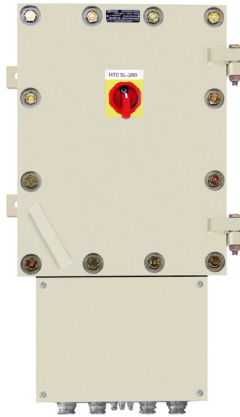
Product code	M20		M25		M32-M40-M42		M50		M63		M75	
	1/2"	Total (1)	1"	Total (1)	1" 1/2 - 1" 1/4	Total (1)	2"	Total (1)	2" 1/2	Total (1)	3"	Total (1)
DE8BC32S	12	32	8	20	3	12	1	4	-	-	-	-
DE8BC351S	12	24	8	18	3	8	1	4	-	-	-	-
DE8BC43S	18	36	14	28	4	16	2	5	1	2	-	-
DE8BC44S	20	40	16	30	5	20	3	6	1	3	-	-
DE8BC54S	20	40	15	30	5	20	3	6	1	3	-	-
DE8BC64S	28	60	18	50	7	28	4	9	1	4	-	-
DE8BC75S	28	72	24	72	10	40	4	11	2	7	-	-
DE8BC86S	32	112	28	100	20	80	5	17	2	8	1	4
DE8BC107S	36	112	32	100	20	80	5	17	3	10	1	4
DE8BC108S	36	112	32	100	20	80	5	17	3	10	1	4
DE8BC148S	72	224	64	200	40	160	10	34	6	20	2	8

(1) Number total of entries on the periphery

Window for DE8BC (others on request)

Product code	Dimensions
REG 100 x 50	100 x 50
REG 100 x 100	100 x 100
REG 200 x 45	200 x 45
REG 235 x 75	235 x 75
REG D45	Ø 45
REG D60	Ø 60
REG D150	Ø 150





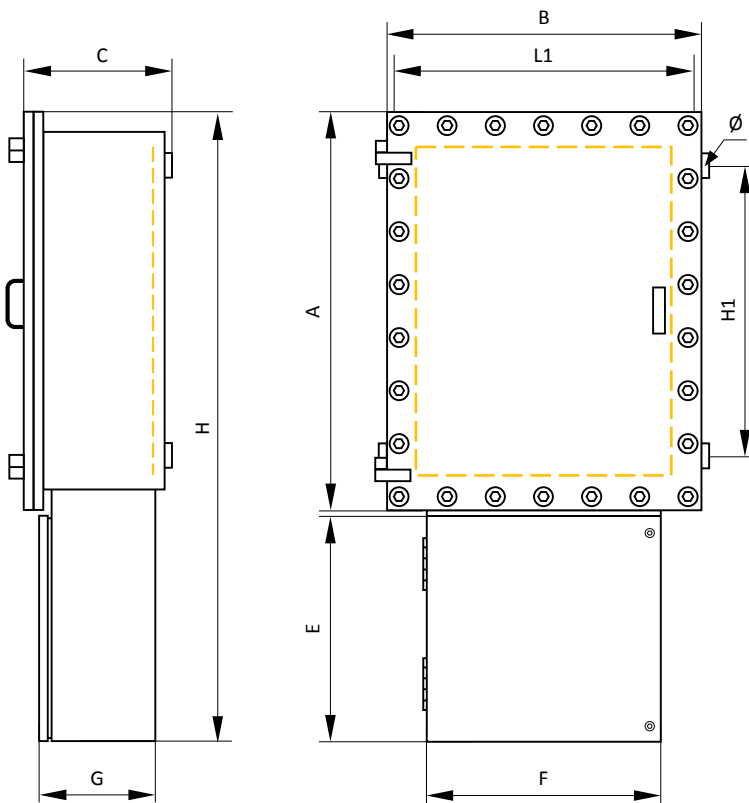
The flameproof control cabinets DE8BC with junction boxes and/or control enclosure are designed for the control, automation, distribution boards, motor starters or any other application.

They are suitable for designing of complex systems for harsh environments and meet the requirements of use in ONSHORE or OFFSHORE.

The wide range of sizes and dissipated powers, one of the wider of the market, allows to be closer to the customers needs and applications.

TECHNICAL DATA

Material	Enclosure in carbon steel painted or stainless steel AISI 316L increased safety (Ex e) enclosure in stainless steel AISI 316L
IP rating	IP65/66 according to EN/IEC 60529
Temperature range	-40°C or -20°C ... +40°C or +50°C or +60°C
Certificate	As equipment INERIS 03ATEX0005X IECEX INE 13.0045X As component INERIS 09ATEX9021U IECEX INE 11.0025U
Marking	II 2 GD As equipment Ex d IIB T6 ... T4 Gb Ex d IIB + H ₂ T6 ... T4 Gb Ex tb IIIC T85°C ... T135°C Db Ex d [ia] IIB T6 Gb Ex d [ia] IIB + H ₂ T6 Gb Ex d [ib] IIB T6 Gb or Ex d [ib] IIB + H ₂ T6 Gb Ex tb IIIC T85°C Db As component Ex d IIB Gb Ex d IIB + H ₂ Gb Ex tb IIIC Db
Surface treatment	Painting RAL 7032 - Other colour and/or offshore painting on request Sand blasting when stainless steel Increased safety (Ex e) enclosure in stainless steel AISI 316L
Accessories on request	Breather valves Earth stud Lifting eyes Cable glands



Dimensions

Product code Carbon steel	Product code Stainless steel	External							Fixing holes		Number of entries
		A	B	C	E	F	G	H	H1 x L1	Ø	
DE8BC32WH270	DE8BC32WH270S	434	334	231	250	270	176	702	234 x 326	12	3
DE8BC351WH270	DE8BC351WH270S	474	354	233	250	270	176	742	274 x 346	12	3
DE8BC43WH330	DE8BC43WH330S	534	434	293	250	330	230	802	334 x 426	12	3
DE8BC44WH330	DE8BC44WH330S	544	544	306	250	330	230	802	334 x 526	20	4
DE8BC44WH520	DE8BC44WH520S	544	544	306	330	520	230	887	334 x 526	20	4
DE8BC54WH330	DE8BC54WH330S	644	544	306	250	330	230	907	414 x 526	20	5
DE8BC54WH520	DE8BC54WH520S	644	544	306	330	520	230	987	414 x 526	20	5
DE8BC64WH330	DE8BC64WH330S	744	544	308	250	330	230	1007	514 x 526	20	5
DE8BC64WH520	DE8BC64WH520S	744	544	308	330	520	230	1087	514 x 526	20	5
DE8BC75WH520	DE8BC75WH520S	864	664	322	330	520	230	1197	614 x 630	20	7
DE8BC86WH670	DE8BC86WH670S	964	764	369	520	670	230	1539	714 x 734	20	10
DE8BC107WH670	DE8BC107WH670S	1164	864	379	520	670	230	1689	908 x 868	20	20
DE8BC108WH670	DE8BC108WH670S	1164	864	424	520	670	230	1689	908 x 868	20	20
DE8BC148WH670	DE8BC148WH670S	1590	940	510	520	670	230	2112	1200 x 900	20	20

Window for DE8BC (others on request)

Product code	Dimensions
REG 100 x 50	100 x 50
REG 100 x 100	100 x 100
REG 200 x 45	200 x 45
REG 235 x 75	235 x 75
REG D45	Ø 45
REG D60	Ø 60
REG D150	Ø 150

